

VIOLONCELLO

for Emily Ezust

Piano Trio in E minor

(2007)

Gary Bachlund

a piacere $\text{♩} = 80$

1. *mf* *ff* *f*

6

13

20

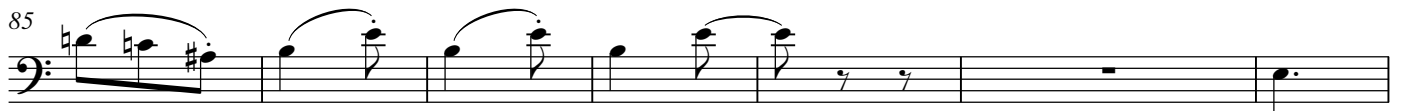
27

34

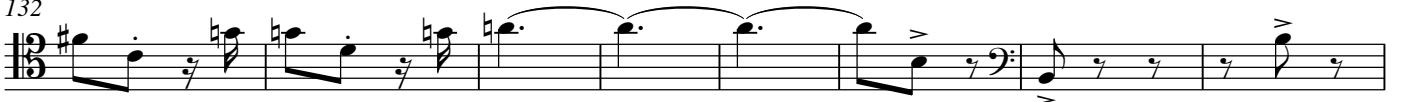
41 *pizzicato* *arco*

48 *pizzicato*

56 *arco*



132



140 *pizzicato*



148 *arco*



158



166



174



183



190



197



2. *a piacere ten.* ♩ = 70

mp

9

mf

17 *espressivo*

mf

25

mp

33

mp

42

mf

47 *espressivo*

mf

54 *ritardando espressivo*

mp

VIOLONCELLO

♩ = 90

3. *f* *pizzicato*

5 *arco*

9 *mf*

13 *tr*

17

22 *mf*

26

30

35 *pizzicato*

f

39 *arco*

43

47 *pizzicato* *arco*

f

51

55

59 *tr* *non ritardando* *pizzicato* *arco*

mp

4. $\text{♩} = 50$ *ritardando*
f

5 *tempo primo*
mf

10

15

20

25

29 *f*

34 *ritardando*
mp

tempo primo

39

Musical notation for measures 39-43 in the bass clef. The key signature is one sharp (F#). Measure 39 starts with a half rest followed by a quarter note F#4. Measures 40-43 contain eighth notes with slurs and accents, including a triplet of eighth notes in measure 41.

mf

44

Musical notation for measures 44-48 in the bass clef. Measures 44-48 continue the eighth-note pattern with slurs and accents, including a triplet of eighth notes in measure 45.

49

Musical notation for measures 49-53 in the bass clef. Measures 49-53 continue the eighth-note pattern with slurs and accents, including a triplet of eighth notes in measure 50.

54

Musical notation for measures 54-58 in the bass clef. Measures 54-58 continue the eighth-note pattern with slurs and accents, including a triplet of eighth notes in measure 55.

59

Musical notation for measures 59-64 in the bass clef. Measures 59-64 continue the eighth-note pattern with slurs and accents, including a triplet of eighth notes in measure 60.

65

Musical notation for measures 65-69 in the bass clef. Measures 65-69 continue the eighth-note pattern with slurs and accents, including a triplet of eighth notes in measure 66.

70

Musical notation for measures 70-74 in the bass clef. Measures 70-74 continue the eighth-note pattern with slurs and accents, including a triplet of eighth notes in measure 71. The instruction *diminuendo al fine* is written above the staff.

75

Musical notation for measures 75-79 in the bass clef. Measures 75-79 contain a series of half notes with slurs. The dynamic markings *mp* and *p* are written below the staff.